

TOSHIBA
Leading Innovation >>>

**TOGETHER
COMMERCE**



TCx™ 700 Series

Refreshed and reinvigorated – Inside/Out

Our most popular, proven platform gets an inside-out makeover.

- > Say goodbye to technology constraints, advanced technology handles store operations faster than ever
- > Looks as good as it works with mix and match color options
- > Smart new features—select only the options that meet your needs
- > A workhorse POS with industry-leading reliability and performance to get the most of your investment

The Toshiba TCx™ 700 Series point-of-sale (POS) system takes performance, efficiency and user interface to a new level. The system features advanced technology; increased efficiency and reliability; and a modular, updated design. The TCx 700 also delivers up to 30 percent more performance with faster processing and more storage options to drive the most demanding applications.

High-speed networking enables consumers and employees to quickly access cross-channel offerings. Connections for up to three video displays with superior graphics help deliver an engaging, interactive customer experience. The TCx 700 Series continues to be the premier POS system for the modern retail environment. It helps retailers deliver deeper brand relationships and an enhanced shopper experience.

Toshiba's Together Commerce™ Experience solutions family continues to grow with the newly designed TCx 700 Series (formerly known as the SurePos 700). We tasked our expert retail design and engineering teams to develop, advance and build upon our core, and industry-leading, SurePos 700 product, and take it to the next level. The result. An amazingly innovative and powerful point-of-sale solution ready for next generation commerce. The flagship 700 system that retailers have come to depend upon, has been reimagined with modern design and new technology, while still keeping its legendary reliability intact.

Under the hood, the Toshiba TCx 700 has all the muscle you need for today's applications. Plus, it's built 'future ready' so your enterprise can adapt, extend and grow, securely and without disruption. The modular, convertible design and standards-based platform make the TCx 700 flexible yet easily upgradeable. Toshiba's retail hardened construction assures a service life of 7+ years delivering high uptime and long-term reliability, even under harsh conditions.

Innovative, retail-optimized technology makes the TCx 700 more valuable to retailers than ever before. With next generation Intel Core i3 processing as an option, scalable memory choices up to 32 GB, and hard disk or solid state drives options, the TCx 700 packs up to 30 percent more performance power, faster processing and extra storage capacity to drive the most demanding consumer service and enterprise applications. High-speed networking enables shoppers and employees to rapidly access cross-channel offerings. Support for dual video displays with superior graphics helps deliver an engaging, interactive customer experience.

- › Virtually tool-free service and "deep-sleep" function streamline operations and lower costs
- › New, specially designed model allows more placement options
- › Scalable memory up to 32 GB adapts to changing business requirements

Keep your system up and running

- › Deep sleep feature saves up to 47 percent in energy and optimizes staff time.
- › Proactively diagnose and correct problems with information light and boot messages.
- › Provide reliable service in the most harsh and rigorous store environments with Retail-hardened systems.
- › Lower service costs with virtually tool-free design.
- › Enable proactive monitoring and servicing with Remote Management Agent.

Designed to make your business more efficient

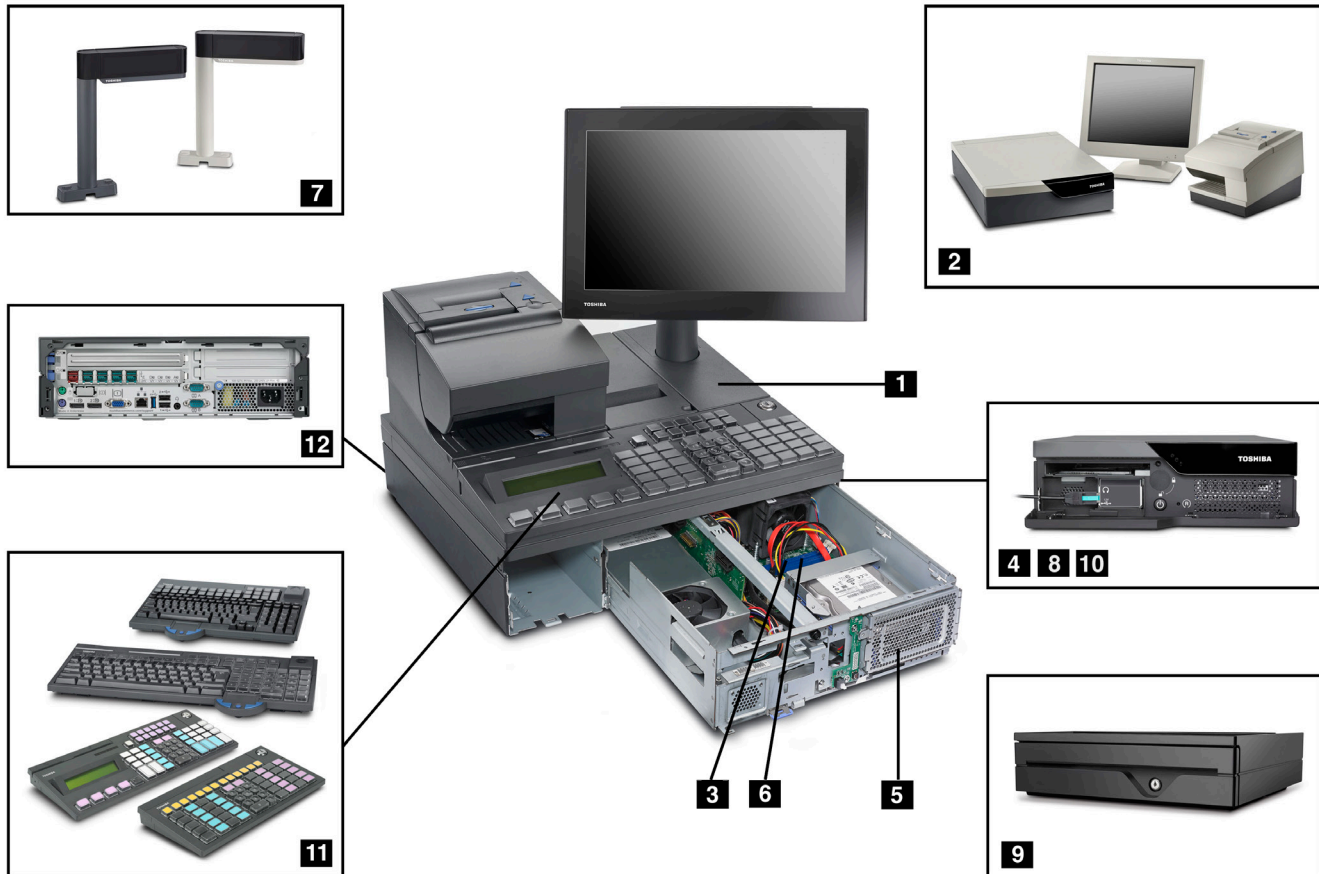
- › With a new low profile, the TCx 700 can be placed in more locations while improving energy efficiency up to 50 percent.
- › Place the system under counters or tight spaces in the store—the TCx 700 has discreet air vents to prevent overheating.
- › Maximize uptime and usability with virtually tool-free, secure and easy front access to internal components.
- › With a service lifecycle of up to seven years and highly scalable technology that integrates with legacy systems, to help retailers get maximum use of their TCx 700 now and into the future.

Transform the point of sale to a cross-channel and omni-channel advantage

Toshiba TCx 700 models, combined with industry-leading Toshiba software, system and data integration and management, take store solutions to new levels of power.

FEATURES

- 1 Shown: TCx 786 with TCx™ Display, SureMark dual-station printer, 67-key Keyboard with LCD
- 2 Mix and match with new color options, Raven Black system color with choice of Iron Gray or Pearl White accents. Choose distributed or integrated configurations with color-matched peripherals (all optional)
- 3 Next Generation Intel technologies deliver power for store applications now and into the future
- 4 Easy to wake deep sleep lets POS “nap” and lower energy costs
- 5 Virtually tool-free design and front access to all components help reduce service time and costs
- 6 Solid state drive options and scalable memory up to 16 GB or 32 GB adapts to changing business requirements and helps speed performance
- 7 New 2x20 displays available in updated design and colors (optional)
- 8 Front vents promote airflow and minimize moving parts to reduce heat and help keep systems up and running
- 9 New Raven Black cash drawer available in USB or SDL complements new cover design and creates a sleek look when used for integration (optional)
- 10 Information light and failure messages proactively monitor system status and help avoid downtime
- 11 USB and PS/2 67-key, 67-key with LCD, ANPOS, and Compact ANPOS (all optional)
- 12 Selectable and upgradeable SurePorts enable retailers to use existing devices and connect customer or employee devices



SPECIFICATIONS

Toshiba TCx 700 Technical Requirements		
Product name	TCx 740	TCx 780
Model number	4900-746, E46, C46	4900-786, E86, C86
Processor	Intel Celeron G1820TE	Intel Celeron G1820 or Intel Core i3 4330 or Intel Core i5 (limited configurations coming in 2016)
Hard disk drive*	500 GB option (upgrade option on E46, standard on C46)	500 GB option (upgrade option on E86, standard on C86)
Solid State drive	64 GB option or 128 GB option (64 GB standard, 128 GB upgrade available on E46, upgrades available on C46)	64 GB option or 128 GB option (64 GB standard, 128 GB upgrade available on E86, upgrades available on C86)
System memory†	2 GB (4 GB on E46, C46; 16 GB max)	4 GB (32 GB max)
Video memory	256 MB (max) (shared with system memory)	
Riser card options	Basic Riser provides 2x PCI Express slots	
	Plus Riser provides 2x PCI Express slots and 128K NVRAM (must have Plus Riser for 4690 support)	
Second drive	Field upgrade option 2nd 500 GB HDD or 64 GB SSD or 128 GB SSD installed available on C46, C86 (2nd drive must be the same media type as the 1st drive)	
DVD burner	Internal option (standard on C46, C86)	
Battery backup	Internal UPS (with iron traditional wide cover only)	
Toshiba SurePorts	See "Toshiba SurePorts" chart for connectivity options. C46, C86 controller models do not include SurePorts.	
Front ports option	One 12 V USB, one headphone	
Back ports	2 PC USB 2.0, 1 PC USB 3.0, 2 RS-232, 1 PS/2 keyboard, 1 PS/2 mouse, Audio mic/line-out, 1 RJ45 Ethernet 10/100/1000, 2 Display Port, 1 VGA	
Additional back port options	1x VGA 2x RS-232, must have plus riser, ports install in PCI slot	
Systems management	SMBIOS, Wake on LAN, PXE, Wired for Management, Trusted Platform Management	
Power management‡	Deep sleep automation, ACPI	

Toshiba TCx 700 Technical Requirements	
Dimensions (WxDxH)	TCx Narrow 320 mm x 444 mm x 102 mm (12.6" x 17.48" x 4.04") TCx Wide 442 mm x 424 mm x 105 mm (17.4" x 16.69" x 4.13") TCx Cable cover adds 51 mm (2") to depth Traditional Wide 435 x 475 x 117.3 mm (17.1"x 18.7" x 4.62")
Weight	TCx Narrow 10.3 kg (22.7 lbs), TCx Wide 12.2 kg (26.9 lb) Traditional Wide: 12.3 kg (27.1 lbs); Wide with UPS: 16.7 kg (36.8 lbs)
Power supply	80 + Platinum Efficient Universal Switched Power Supply (47 - 63 Hz), 90 W typical/250 W maximum
Operating systems supported[§]	Toshiba 4690 OS, V6.5 Enhanced (by 1H2016) Microsoft Windows POSReady 2009 Microsoft Windows POSReady 7 (64-bit* and 32-bit) Microsoft Windows 7 Professional (64-bit* and 32-bit), or Ultimate Microsoft Windows 8.1 Professional (64-bit) Microsoft Windows Embedded 8.1 Industry (64-bit) Microsoft Windows 10 Professional (64-bit) by year end SUSE Linux Enterprise 11 Server SP3 coming in 2016 SUSE Linux Enterprise 11 Desktop SP3 coming in 2016 Windows® 10 IoT Enterprise 2015 LTSB for Retail or Thin Clients (Preload option E46, E86)
Drivers supported	UPOS 1.14.0 or higher (includes OPOS, JavaPOS)
Applications supported	Toshiba SurePOS ACE; Toshiba General Sales Application; Toshiba 4680 - 4690 Supermarket Application; customized Toshiba applications; Toshiba Business Partner software solutions
Management tools	Toshiba Remote Management Agent; IBM Director
Limited warranty**	One-year onsite service. Extended service available through TCxCare.
Technical support^{††}	Techline web-based help
Service availability	Up to seven years following withdrawal from the market

* MB/GB equals one million/billion bytes when referring to storage capacity; accessibility may be less

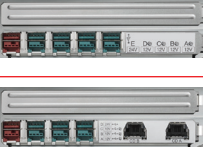



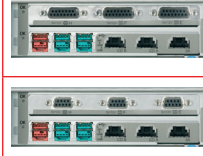
† Memory supports both system and video. Accessible system memory will be the installed memory size less the amount defined for video

‡ Power management functionality is device-dependent

§ Microsoft Embedded preload standard on E45, E85. On other models an operating system is not included but can be purchased separately

** Terms may vary by country. For a copy of the terms and conditions of Toshiba's Statement of Limited Warranty, please contact your Toshiba representative or reseller

†† Technical support response times may vary

SurePorts	Bottom row		Optional top row		
	Basic Riser options	Plus Riser	Basic or Plus Riser Powered USB	Plus Riser only RS-485	Plus Riser only RS-232
					
Cash drawer	0 or 2	2			
Powered USB 2.0 (12 V)	4 or 3	2	5		
Powered USB 2.0 (24 V)	1	1			
RS-485 port 5 keyboard				1	
RS-485 port 4 customer display				1	
RS-485 port 7 printer**				1	
RS-485 port 9 customer display/scanner		1		1	
Powered RS-232 (12 V or 5 V)					3 (15-pin or 9-pin)

Peripheral options***	
Displays	Toshiba TCx Display, Toshiba SurePoint™ (touch/nontouch), USB, RS-485 and RS-232 40-character and character/graphics displays
Printers	Toshiba SureMark™ printers, Toshiba 4689-TD5 SurePOS printer, Toshiba Fiscal printers
Keyboards	USB and PS/2 modular 67-key, ANPOS, and Compact ANPOS
Cash drawers	Full-size, compact and flip-top
Integration trays	System unit, table-top, and cash drawer slant top trays

** A single POS printer can be plugged in and operational, 24 V available in Japan

*** Not all peripherals are available in all countries. Please contact your local Toshiba representative for details

CONTACT US FOR SALES ASSISTANCE

For More Information, Contact Us Today

Contact us or your local Toshiba representative to learn how the TCx 700 can create a better shopping experience for your customers and a smarter operation for your business.

Or visit:

www.toshibacommerce.com

Additionally, Toshiba Global Commerce Solutions can help credit qualified clients acquire the solutions that your business needs in the most cost-effective and strategic way possible through our global financing partner.

Together Commerce

Together Commerce is Toshiba's vision for the new future of retail where retailers adapt their strategies, their stores and their technology to engage with consumers throughout the buying process in a seamless and helpful way. This collaborative approach enables retailers and customers to create mutually rewarding commerce—together.

Trust Toshiba's retail experience

As the world's leading provider of integrated in-store solutions and retail insights, Toshiba Global Commerce Solutions delivers end-to-end solutions for checkout, consumer interactions and retail operations that unlock amazing new possibilities for our clients and shoppers everywhere.

TCx 700 Series

- 1 The new Toshiba TCx 700 models delivers up to 50 percent reduction in maximum power consumption compared to select withdrawn models. Turning on deep sleep for 12 hours should save an additional 47 percent. Source: <http://www.toshibagcs.com/news/why/ecofriendly/index.html>
- 2 The new Toshiba TCx 700 models provides up to 30 percent more performance when compared to select predecessor models available.

TOSHIBA

Leading Innovation >>>

Copyright © 2016 Toshiba Global Commerce Solutions, Inc.

Toshiba Global Commerce Solutions, Inc.
3901 S. Miami Blvd.
Durham, NC 27703
U.S.A.

Toshiba and the Toshiba logo are trademarks or registered trademarks of Toshiba in the United States, other countries, or both.

The information included in this publication could include technical inaccuracies or typographical errors. All such information is provided "AS IS" without warranties of any kind, express or implied, including but not limited to the implied warranties of merchantability or fitness for a particular purpose.

Not all Toshiba products and services are available in every country. All statements regarding Toshiba's future direction and intent are subject to change or withdrawal without notice, and represent goals and objectives only.

Toshiba Global Commerce Solutions home page is at www.toshibacommerce.com



Please Recycle