

**TOGETHER  
COMMERCE**

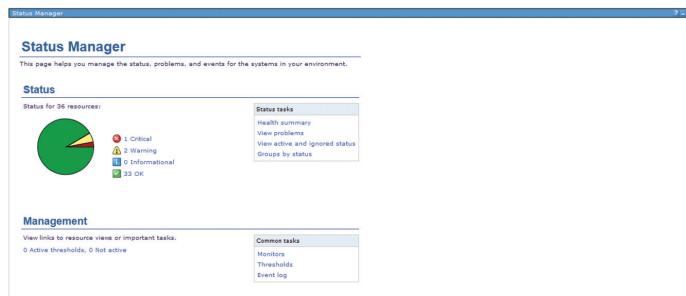


# Toshiba Remote Management Agent

Get visibility and control of all your  
retail store systems

# STREAMLINE STORE OPERATIONS WITH REMOTE MANAGEMENT

- › Proactively find systems problems before they become a problem
- › Track assets to understand what you have and where
- › Update your systems software and firmware from one location
- › Create event notifications to automate tasks



Red, Yellow, Green health status information shows the status of all your store systems, at-a-glance, making it easier than ever to keep store systems active and healthy.

## Give shoppers a better experience

Toshiba Remote Management Agent (RMA) ensures your shoppers have the best store experience possible

- › Allows for shorter checkout lines
- › Store employees who can spend more of their time serving customers rather than dealing with technical issues.

## Keep your store systems healthy

RMA provides a single remote view and control of store and enterprise systems—including POS systems, peripherals, kiosks, self-checkout lanes, and in-store servers. RMA makes it easy to act quickly, keeping store systems available and healthy.

## Manage your retail assets and track inventory

Reduce your service costs and maintain consistent levels of hardware and software by keeping an up to date record of all your retail systems throughout the enterprise. With RMA you can track serial numbers, machine types, model numbers, BIOS versions, firmware versions, application levels and security patches.

## Easily distribute software updates

Keeping all your systems up to date and at the same level of software and firmware versions ensures a consistent technology experience across all stores. RMA will make this arduous task easy.

### Analyze your systems efficiently so you can Manage your stores efficiently

RMA will allow your business to analyze what Hardware and Software is installed so you can make better decisions. You can also ensure that your systems will have the same level of software installed which will make training and troubleshooting easier and more cost effective.

### Manage Operations Efficiently

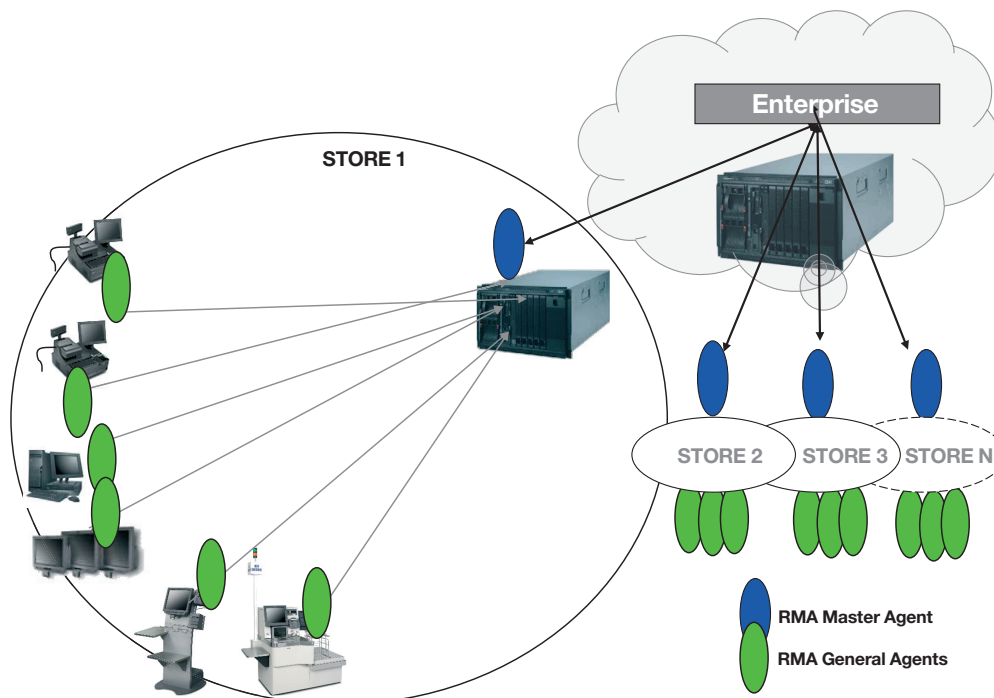
RMA can identify problems more quickly by collecting, storing and reporting detailed information about hardware and software throughout the enterprise

RMA can solve problems—even before they happen—which can lead to:

- > Reduced service costs,
- > Better utilization of IT resources, and
- > A longer life for your retail systems.
- > Improved your customer satisfaction by ensuring your lanes are operating more efficiently and your staff is available for your customers.

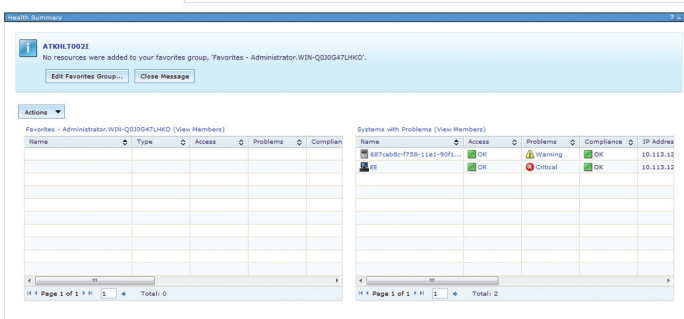
### How can Toshiba Remote Management Agent transform my business?

- > Manage store devices and enterprise systems from a single console
- > Proactively monitor, troubleshoot and resolve problems quickly
- > Adopt new technologies faster and without disruption
- > Ensure a consistent technology experience across all stores

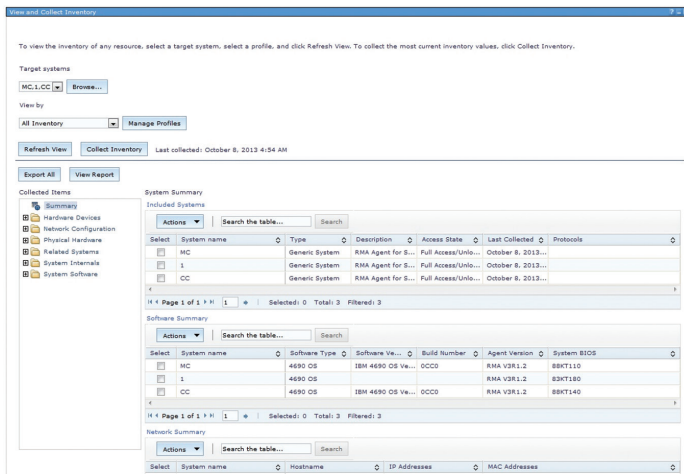


Toshiba Remote Management Agent (RMA) is a unique, end-to-end systems management solution designed by Toshiba specifically for retail. Now integrated with IBM Systems Director 6.x, RMA gives you the ability to manage all your store systems from a centralized location.

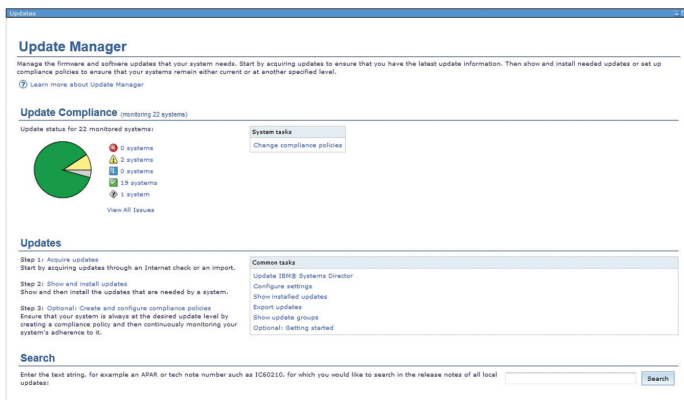
# FEATURES



New scoreboard display plus an easy way to “drill down” for problem determination. Customizable alerts and comprehensive event management add power and flexibility to your store operations.



Comprehensive asset information includes POS hardware, software, operating system, firmware, and attached I/O.



New “Update Manager” feature makes it even easier to keep your systems up to date.

# SPECIFICATIONS

## Technical requirements

### Hardware

Toshiba TCxWave

SurePOS 300

SurePOS 500

SurePOS 700

Toshiba AnyPlace Kiosk

Toshiba System 6 Self Checkout

SureMark™ Printers

Toshiba POS I/O

### Hardware Requirements

*General Agent, minimum*

1 GHz processor

70 mb of free memory (minimum)

*Master Agent, minimum*

1 GHz processor

1 GB of system memory (minimum)

### Operating Systems

Microsoft 2003 Server with Service Pack (SP) 2

Microsoft 2008 Server with Service Pack (SP) 2 (64 bit or 32 bit)

Microsoft 7 Professional (32 bit)

Microsoft 7 Ultimate (64 bit)

Microsoft Embedded POSReady 7

Embedded Point of Service (WePOS) Preload V1.1

SuSE 11 SP 1, SP 2, SP3

4690 OS V6R4

Microsoft Embedded POSReady 2009

Microsoft XP Professional with SP 3

# CONTACT US FOR SALES ASSISTANCE

Contact us or your local representative about how Remote Management Agent can create a smarter shopping experience and build a smarter operation for your business.

Or visit:  
[www.toshibagcs.com](http://www.toshibagcs.com)

Additionally, Toshiba Global Commerce Solutions can help credit qualified clients acquire the solutions that your business needs in the most cost-effective and strategic way possible through our global financing partner.

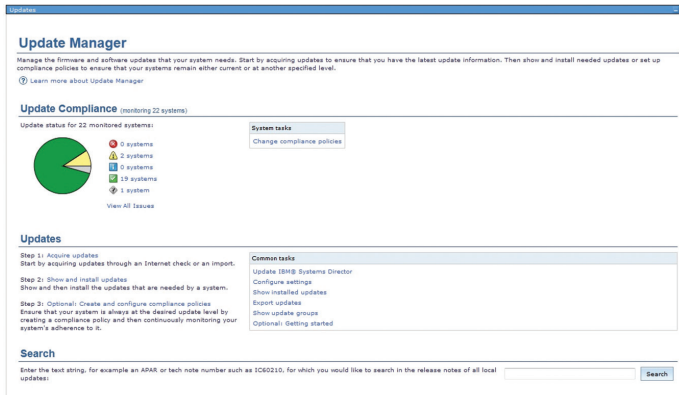
## Together Commerce

Together Commerce is Toshiba's vision for the new future of retail where retailers adapt their strategies, their stores and their technology to engage with consumers throughout the buying process in a seamless and helpful way. This collaborative approach enables retailers and customers to create mutually rewarding commerce—together.

## Trust Toshiba's retail experience

As the world's leading provider of integrated in-store solutions and retail insights, Toshiba Global Commerce Solutions delivers end-to-end solutions for checkout, consumer interactions and retail operations that unlock amazing new possibilities for our clients and shoppers everywhere.

## Remote Management Agent



## TOSHIBA Leading Innovation >>>

Copyright © 2013 Toshiba Global Commerce Solutions, Inc.

Toshiba Global Commerce Solutions, Inc.  
3039 Cornwallis Road  
Research Triangle Park, NC 27709  
U.S.A.

Toshiba and the Toshiba logo are trademarks or registered trademarks of Toshiba in the United States, other countries, or both.

The information included in this publication could include technical inaccuracies or typographical errors. All such information is provided "AS IS" without warranties of any kind, express or implied, including but not limited to the implied warranties of merchantability or fitness for a particular purpose.

Not all Toshiba products and services are available in every country. All statements regarding Toshiba's future direction and intent are subject to change or withdrawal without notice, and represent goals and objectives only.

The Toshiba Global Commerce Solutions home page on the Internet can be found at [toshibagcs.com](http://toshibagcs.com)



Please Recycle

