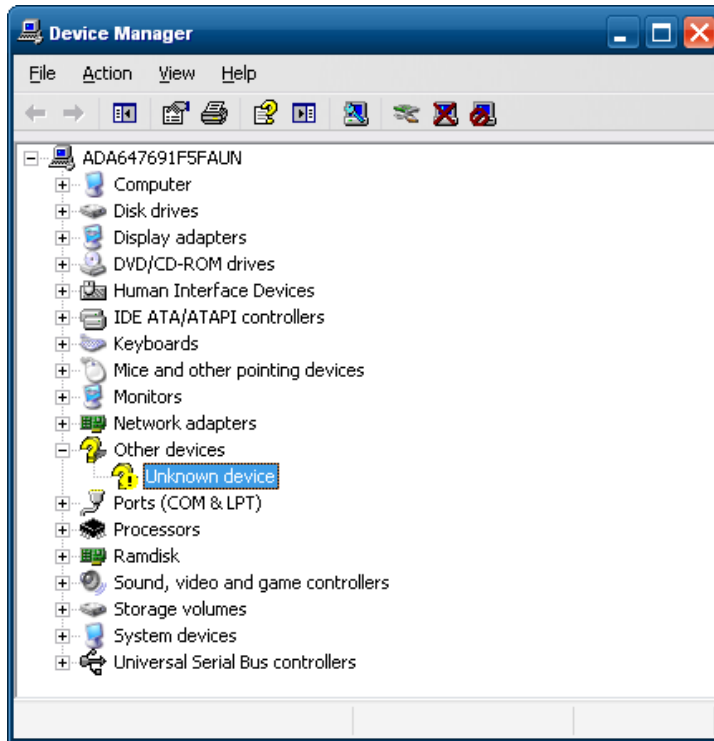
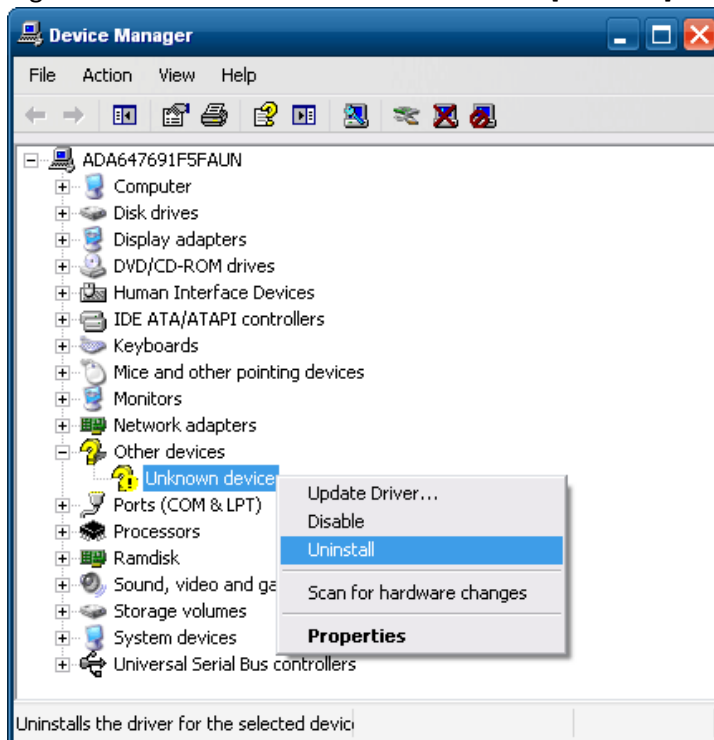


This document explains the steps to installing the Microsoft Windows Native driver for the unknown audio device that is not supported by the audio driver package for POSReady 2009 for 4900-7x6.

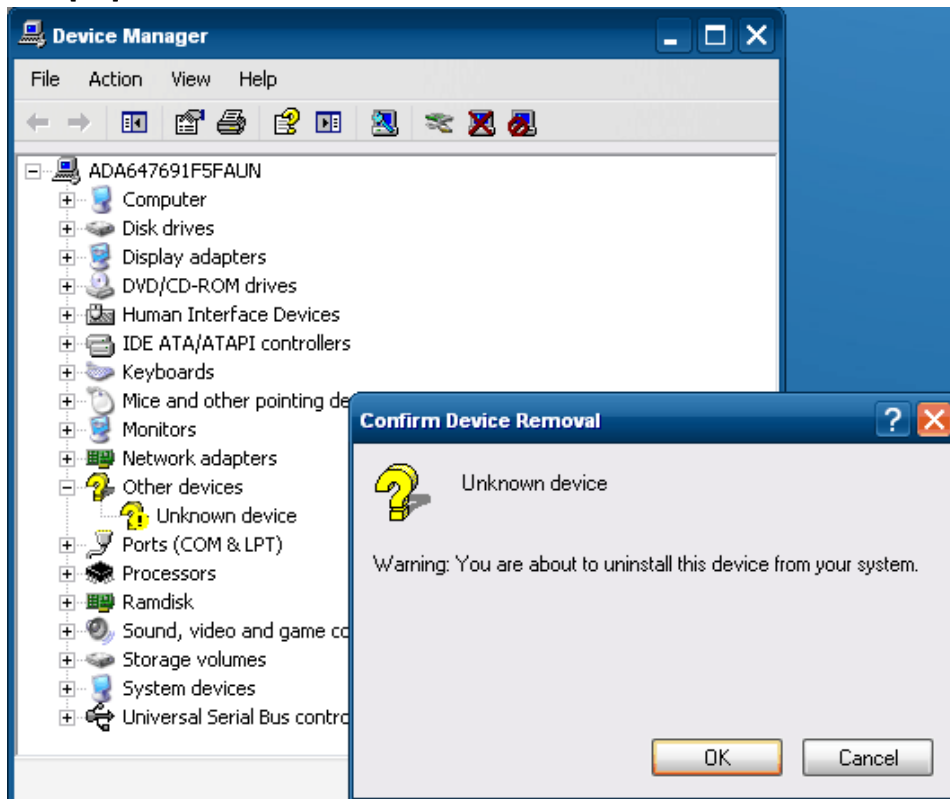
1. Open Device Manager



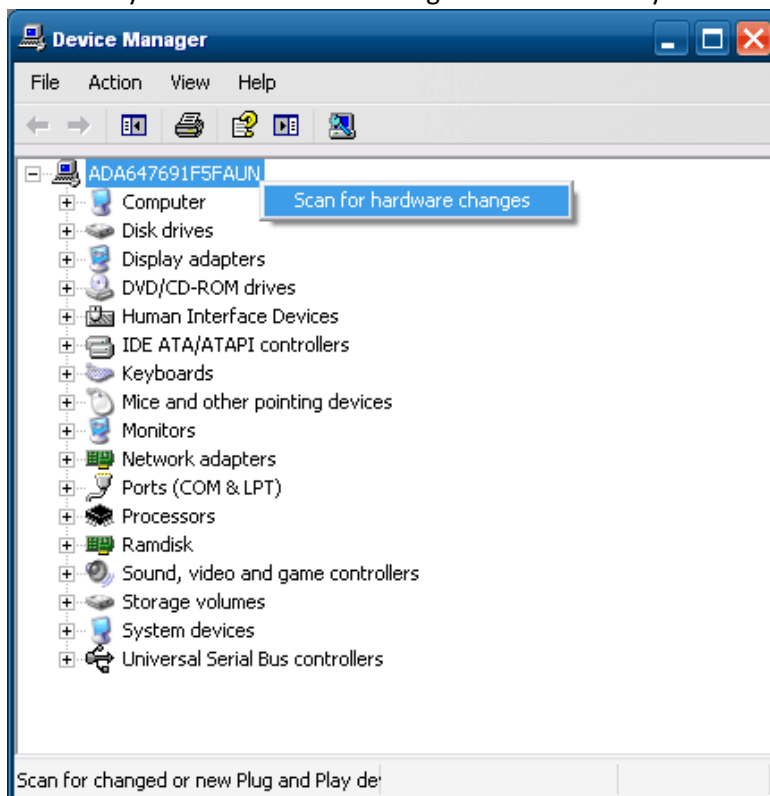
2. Right click on the Unknown device and select [Uninstall].



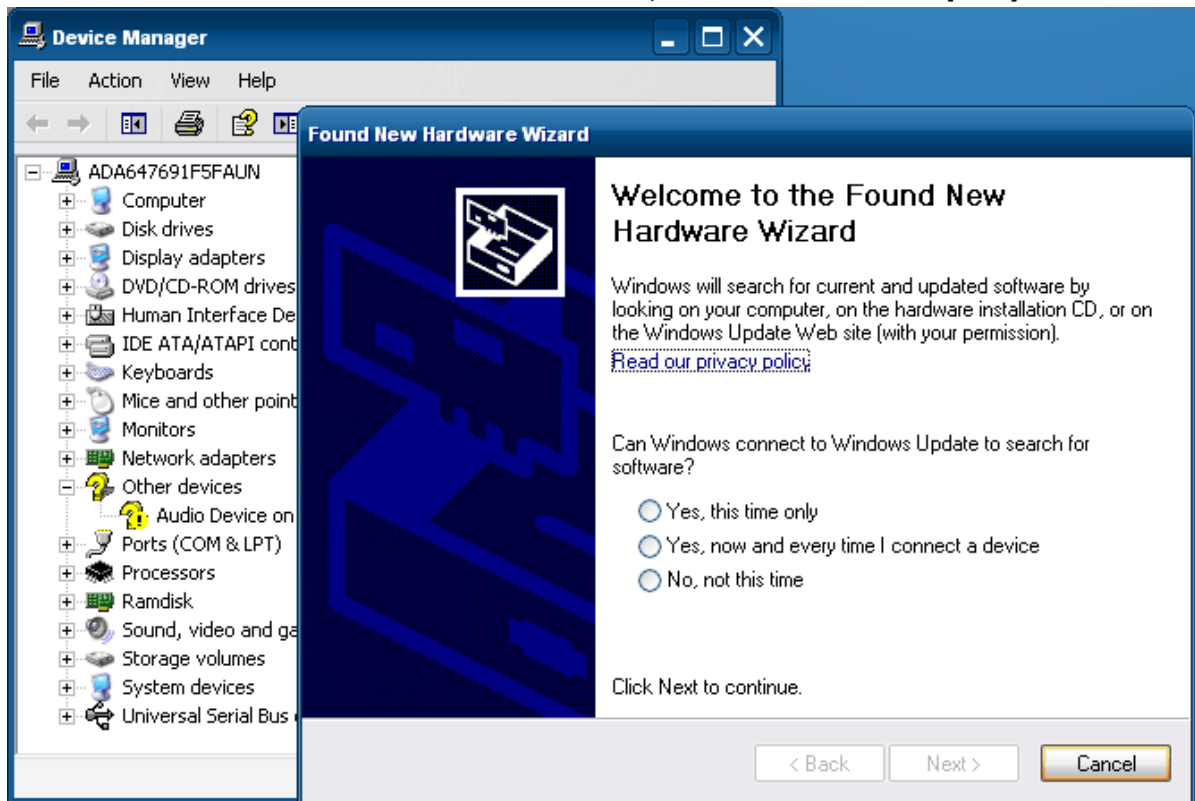
3. Click [OK] to confirm device removal.



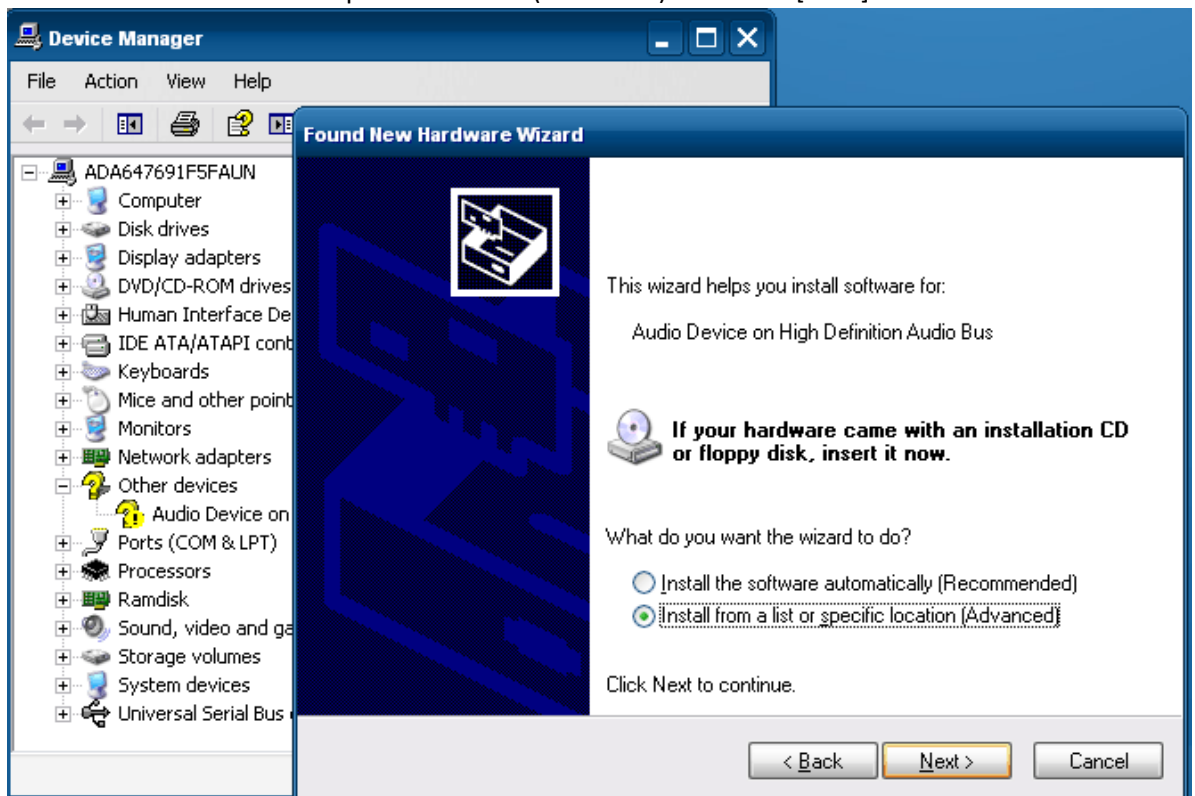
4. Scan the system for hardware changes or restart the system.



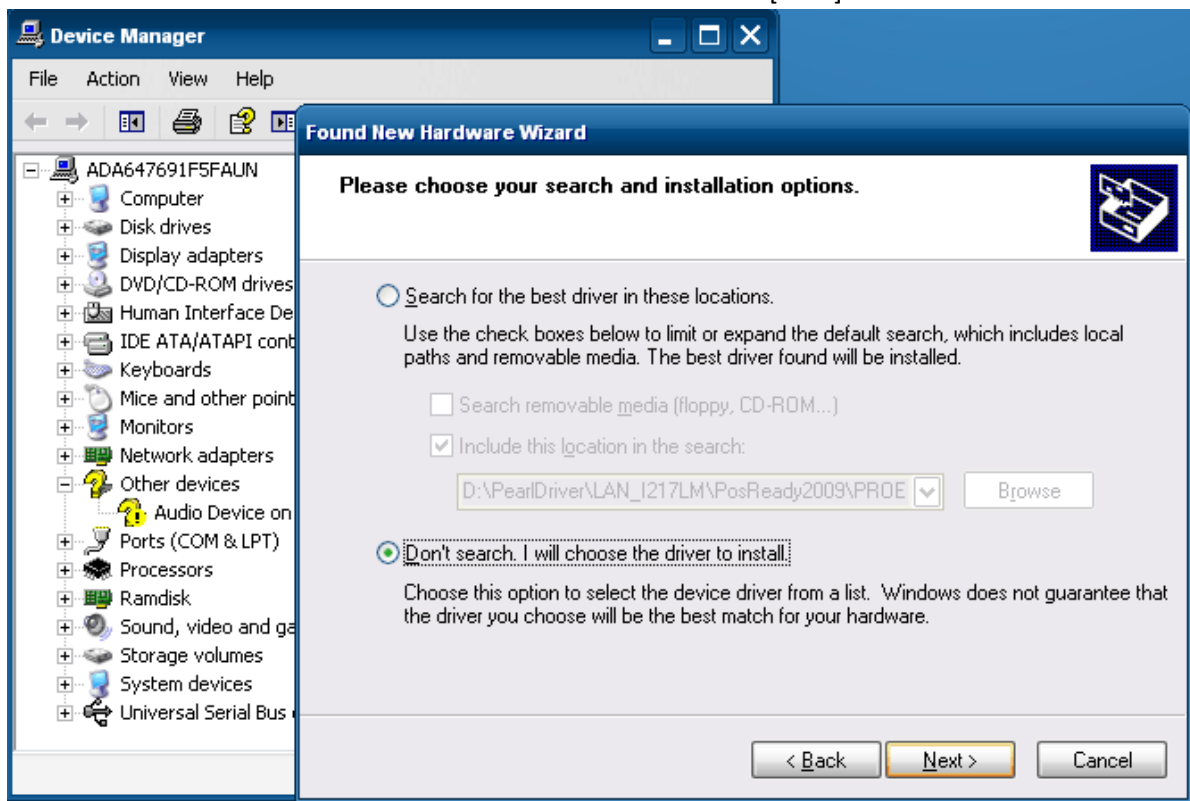
5. Hardware Wizard detects unknown device. Select "No, not this time" and click [Next].



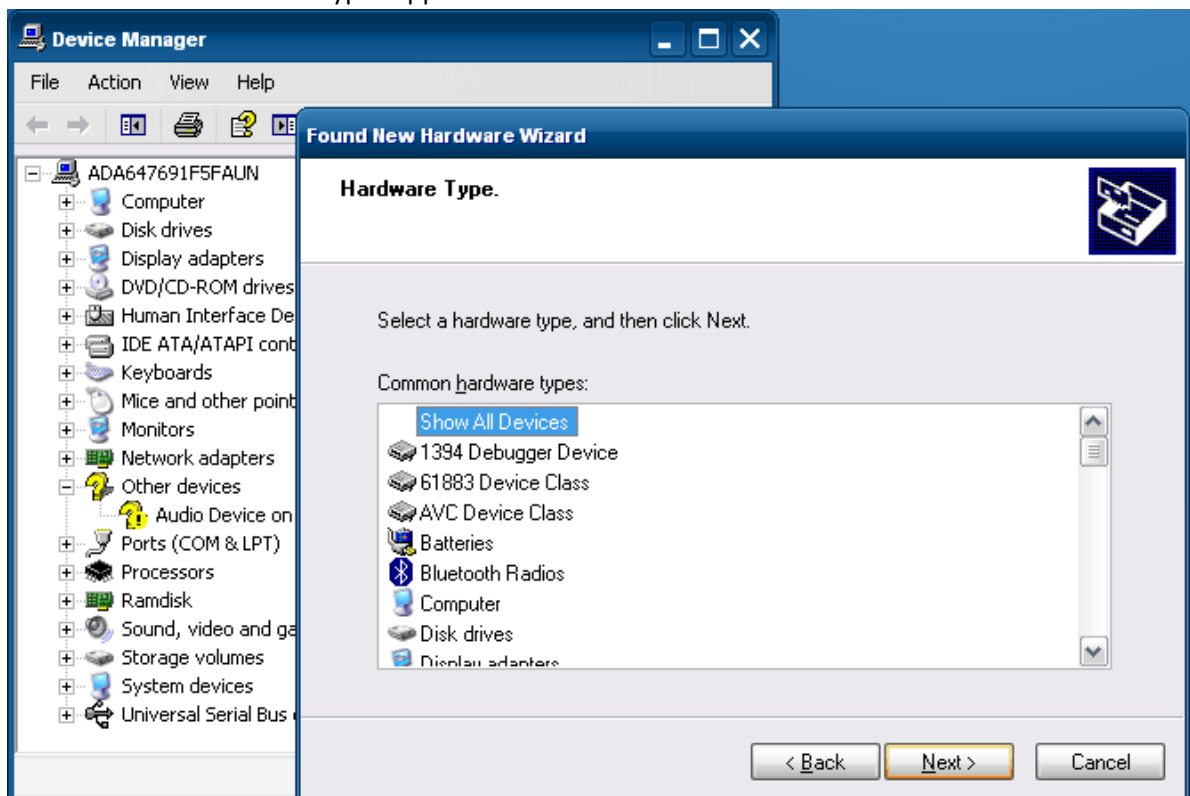
6. Select "Install from a list or specific location (Advanced)" and click [Next].



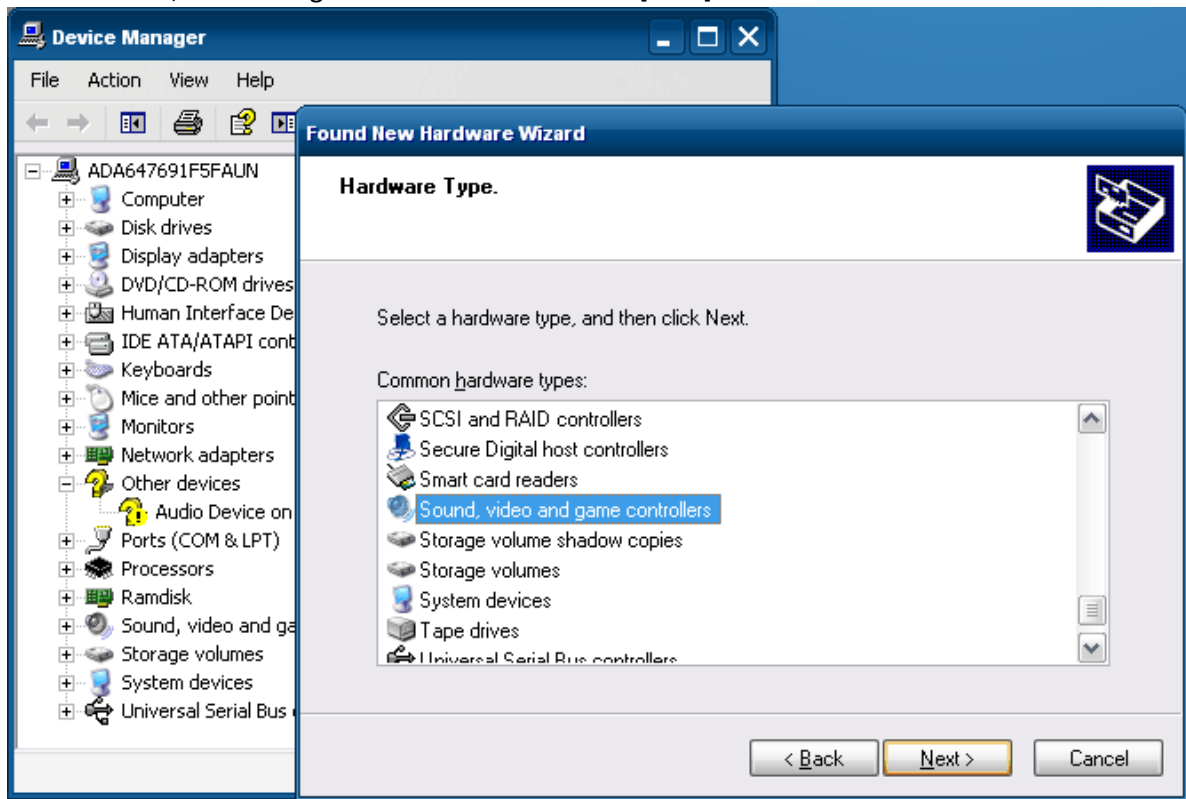
7. Select "Don't search. I will choose the driver to install" and click [Next].



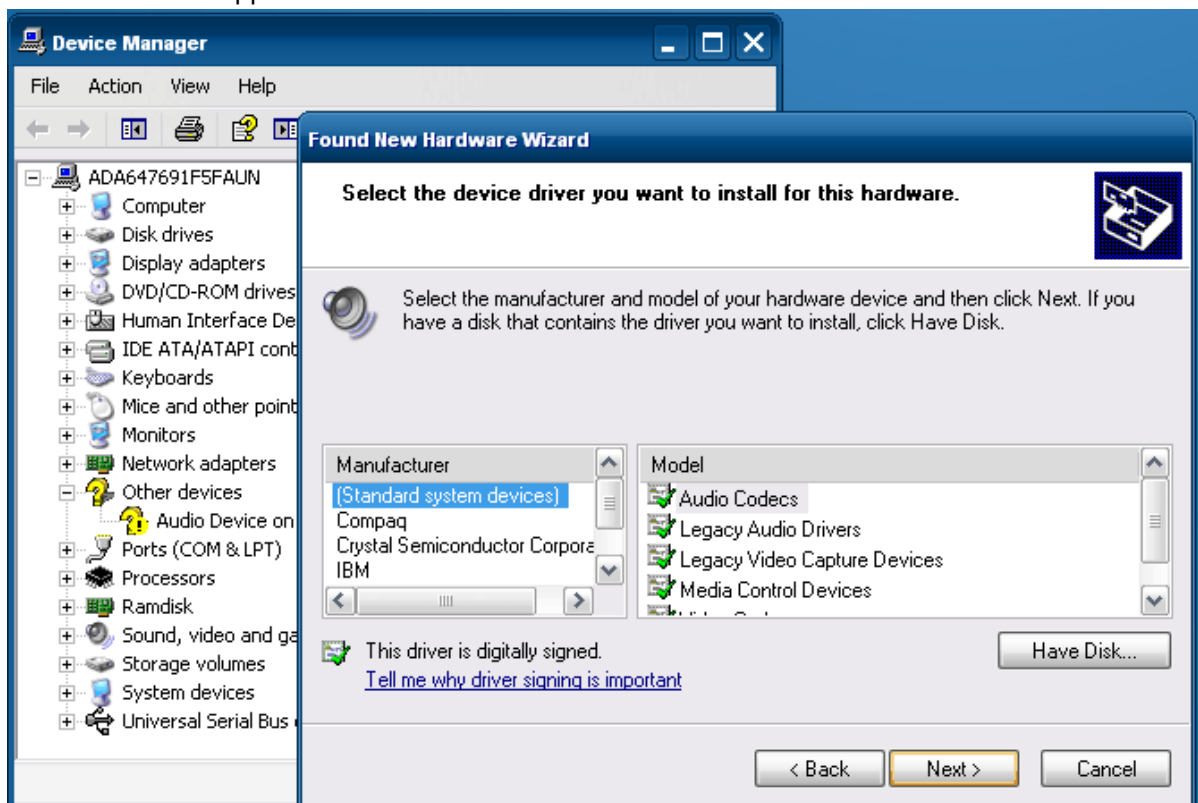
8. List of Common hardware types appears.



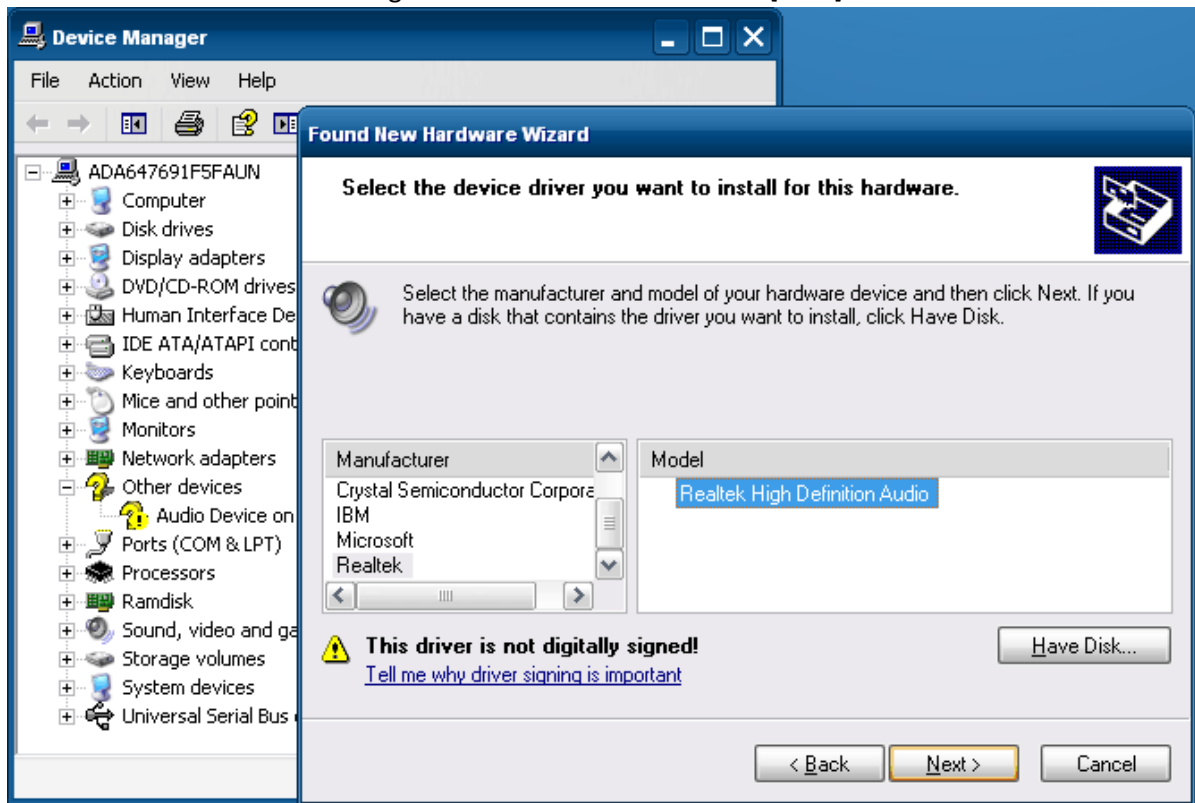
9. Select "Sound, video and game controllers" and click [Next].



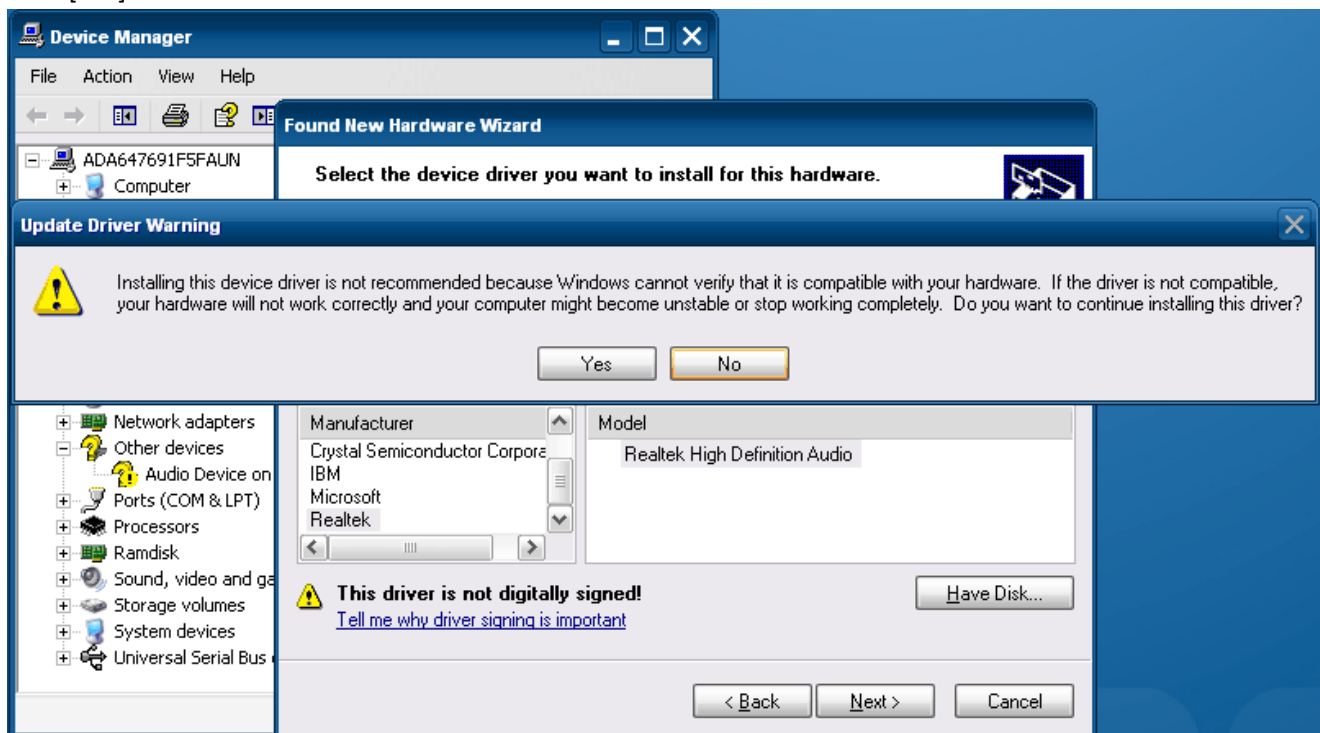
10. Manufacturer list appears.



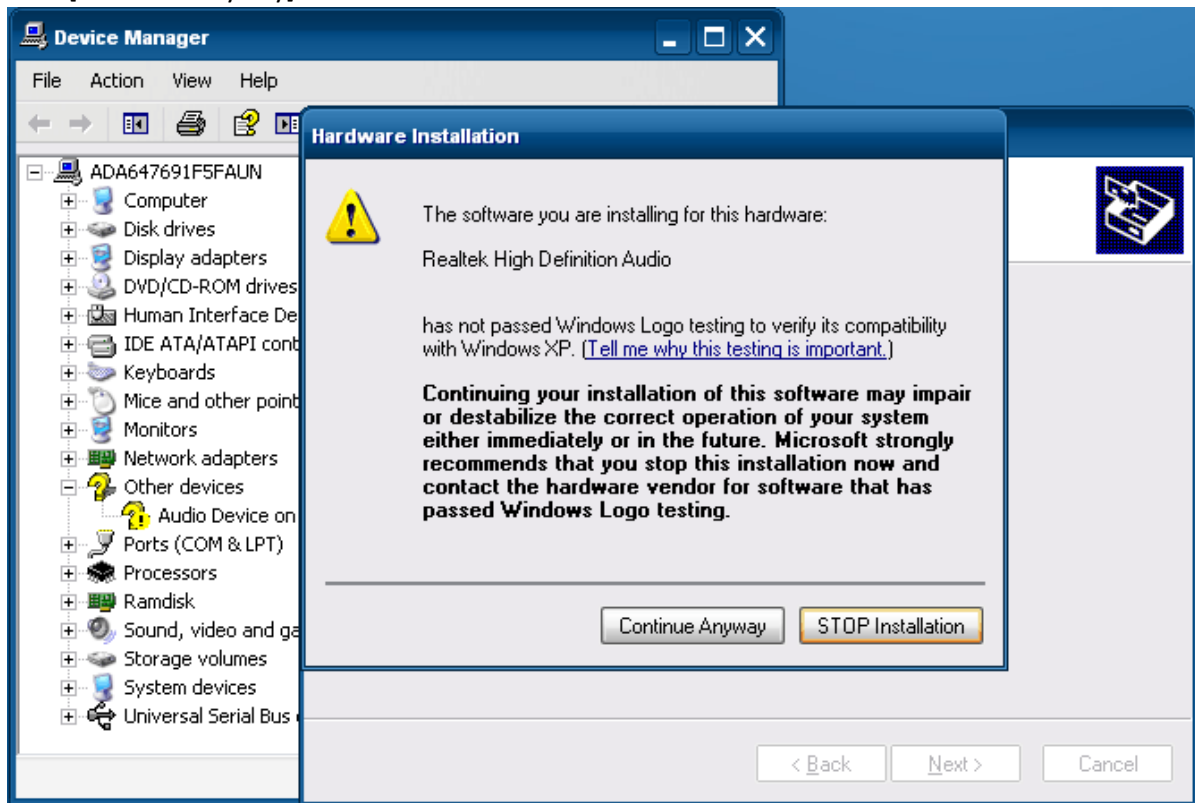
11. Select "Realtek" and "Realtek High Definition Audio". Then click [Next].



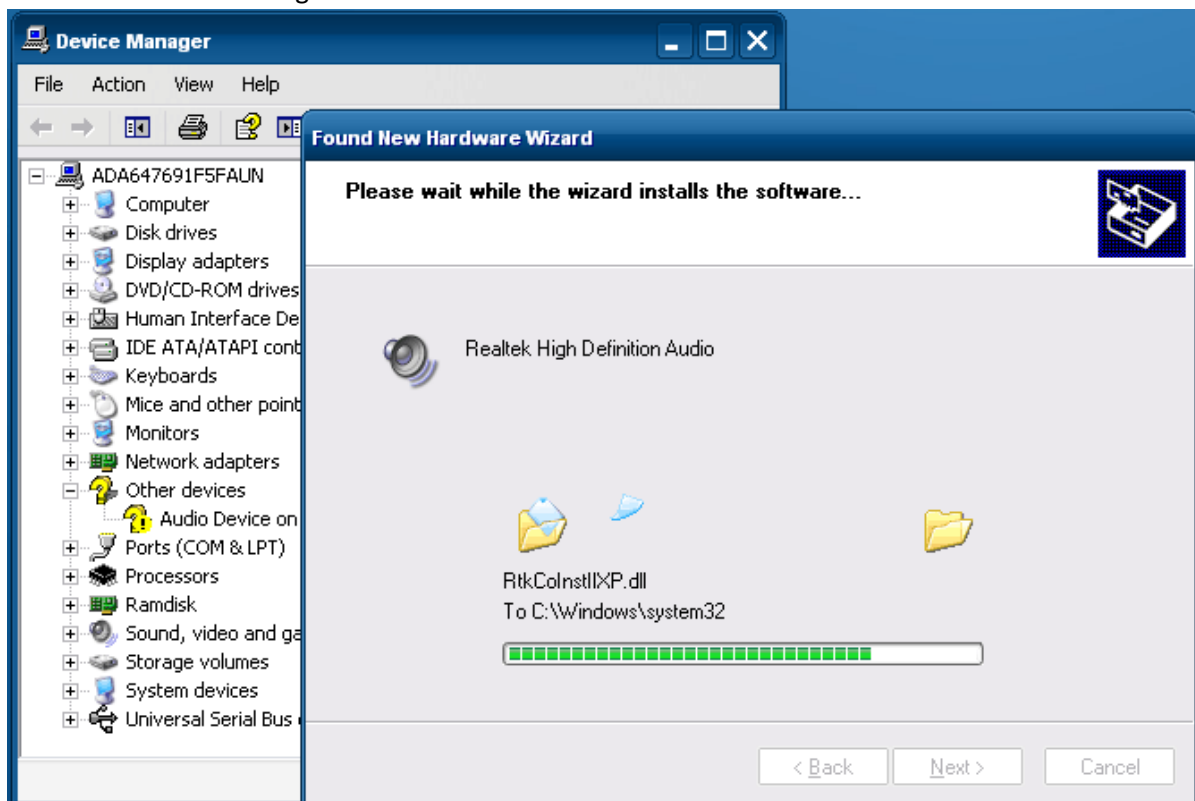
12. Click [Yes] to continue.



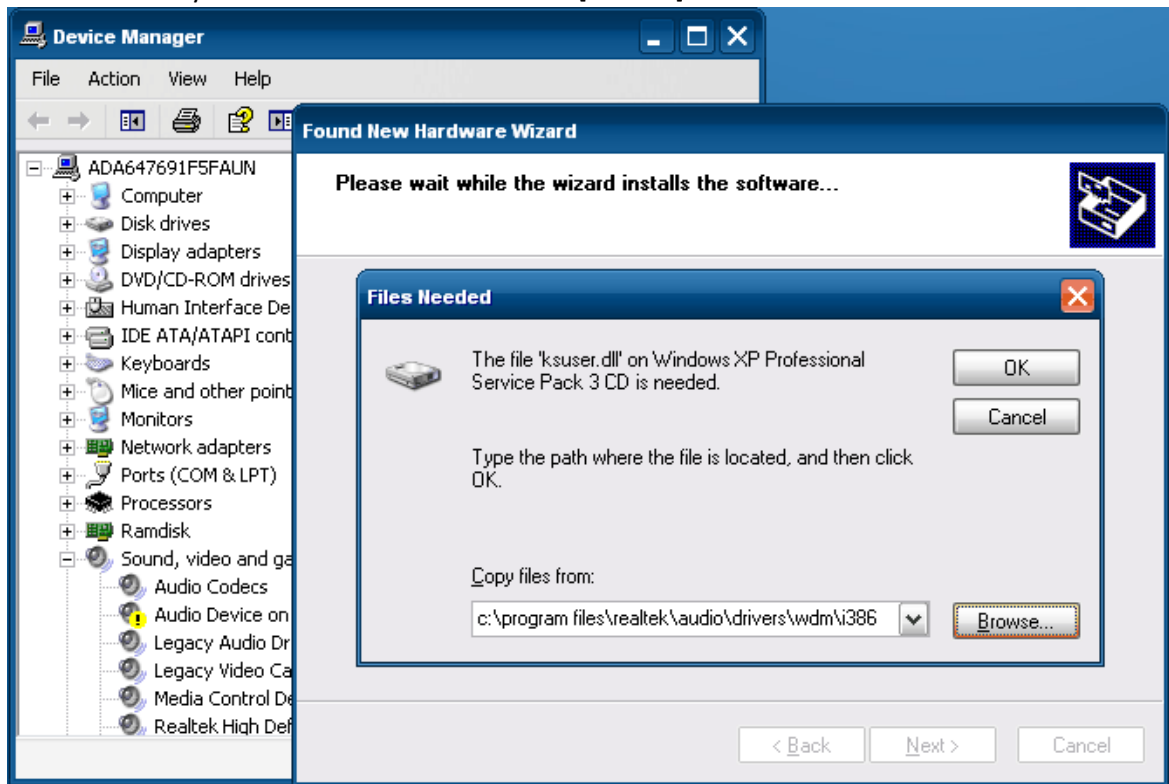
13. Click [Continue Anyway].



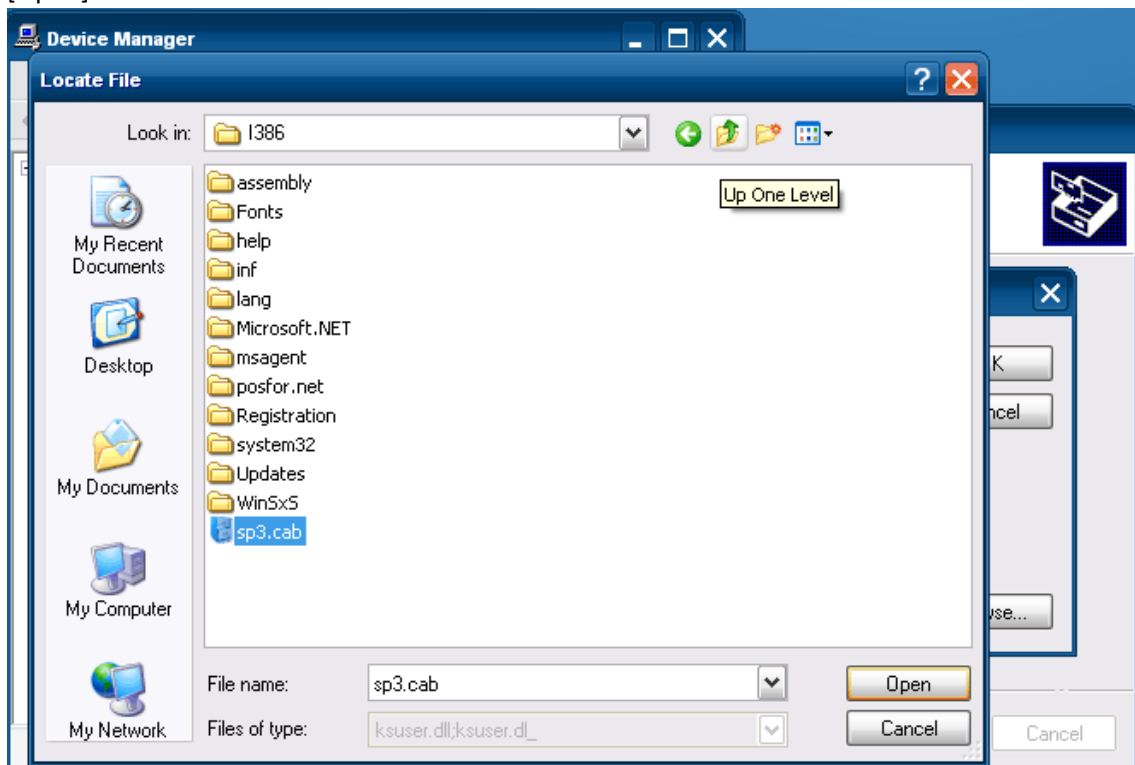
14. The device driver is being installed.



15. Insert POSReady 2009 installation disc and click [Browse]



16. Browse to the I386 folder on the POSReady 2009 installation disc, select sp3.cab and click [Open].





17. Click [Finish] to complete installation.

